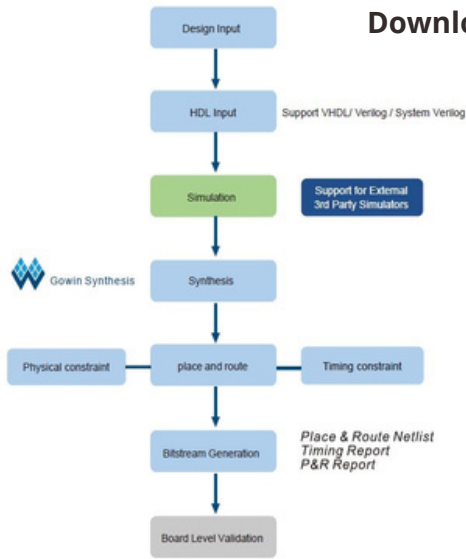


GOWIN EDA Overview



Download : https://www.gowinsemi.com/en/support/download_eda/

GOWIN EDA Features

- ★ Complete GUI Based environment from FPGA design entry, code synthesis, place and route, and bitstream generation
- ★ Integrates in-house GowinSynthesis for front end design
- ★ Supports creating RTL and Post-Synthesis
- ★ Language and constraints files that users require
- ★ Integrates IP Core Generator
- ★ Online debug tool: GOWIN analysis Oscilloscope (GAO) for instant analysis of the signal design

Registration and Download

1. You must register as a GOWIN Member here:



2. Download the desired GOWIN EDA version here:

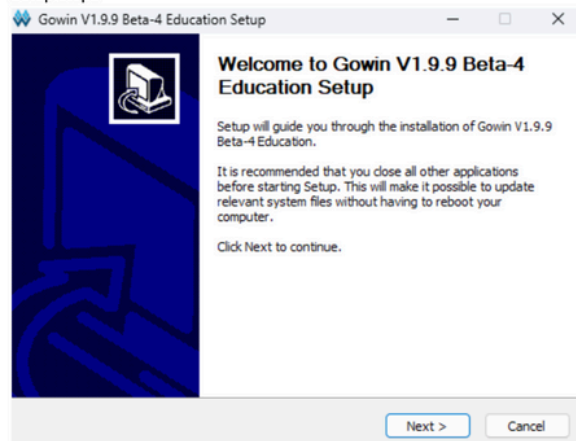


An education version, such as “Gowin V1.9.9 Beta-4 Education”, runs without a license but does not support FPGA chips on high-end boards, such as Tang Mega 138K. A commercial version requires getting a license file by requesting it from Gowin.

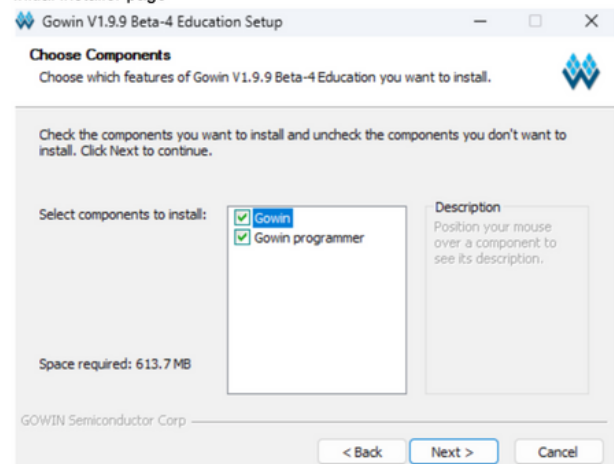
Setup for Windows

After downloading the archive from the site, unpack it and run the .exe file with the installer.

Setup steps

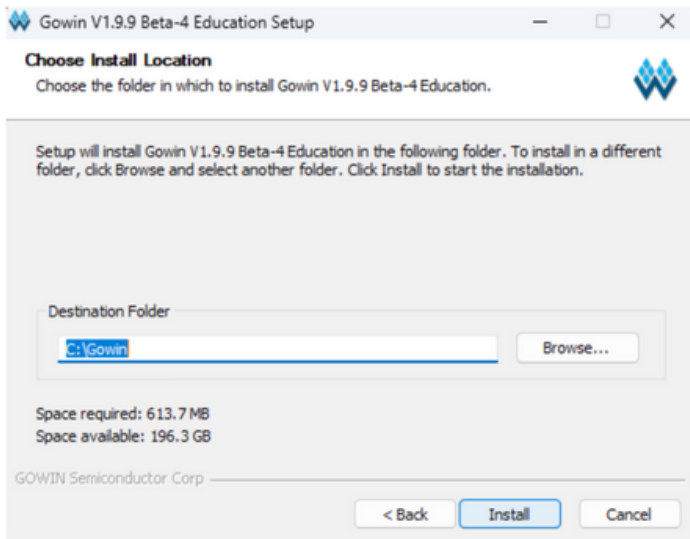


Initial installer page

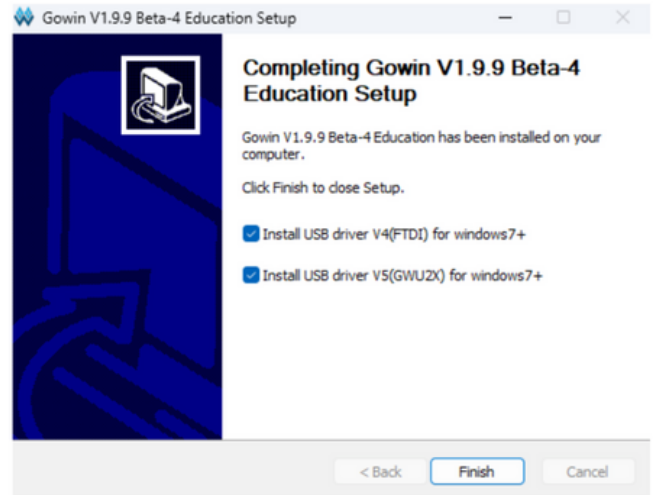


Select all components for installation

Setup for Windows Continued



Select the default installation path



You also need to agree with all further installation steps for the drivers

Setup for Linux

Suppose you downloaded an installation file `Gowin_V1.9.9.03_Education_linux.tar.gz` into a directory `~/Downloads`. You need to extract the product file tree using either GUI or via command line:

```
tar -xvzf Gowin_V1.9.9.03_Education_linux.tar.gz
```

Then you need to move the extracted files to a suitable location, such as a "gowin" directory inside the user home directory. You can do it using GUI or via command. If the `~/gowin` directory already exist, remove or rename it. Then run:

```
mv ~/Downloads/Gowin_V1.9.9.03_Education_linux ~/gowin
```

You can remove the downloaded file `Gowin_V1.9.9.03_Education_linux.tar.gz` afterward.

You can add the path to Gowin executables to the Bash shell PATH variable by adding the following text to either `.profile` or `.bash_profile` file in the user's home directory:

```
export PATH="${PATH:+$PATH:}~/gowin/IDE/bin:~/gowin/Programmer/bin"
```

Installation Verification

For the `PATH` to be effective, log out and log in again. You can verify the installation is correct by running either `gw_sh` or `gw_ide` command. `gw_sh` should give you a prompt inside a Gowin Tcl console:



Prompt by TCL Command Line

`gw_ide` should start Gowin IDE GUI.

